

User Manual

The Hercules Patient Repositioner™ System



#8106 Rev. 1.0

SIZEWISE

04.07.2015

User Manual



Table of Contents

Definition of Symbols.....	3
Manual Definitions	3
Warnings and Cautions	3
Device Information	4
Description of the Device	4
Purpose of the Device	4
Indications for Use.....	4
Specifications	5
Unpacking and Set-Up Instructions	6
Unpacking Instructions for the 39” SW™ Lowboy®/Evolution™	7
Set-Up Instructions for the 39” SW™ Lowboy®/Evolution™	8
Unpacking/Installation Instructions: SW™ Bari-Rehab Platform ² ™	20
Operating Instructions.....	29
Control Unit Operation	29
Hercules Patient Repositioner.....	30
Hercules Support Surface/Mattress.....	32
Positioning Sheet	33
Patient Care Functions	34
Placing the Patient on the Support Surface/Mattress	34
Re-Positioning the Patient.....	35
Prone Position	35
Changing The Positioning Sheet With A Patient In Bed	35
Safety Tips	40
Seven Zones of Bed Rail Entrapment.....	40
Storage and Disposal.....	41
Important Safety Instructions.....	42
Unpacking and Set-Up Instructions	42
Electrical Safety Tips	42
Support Surface Cleaning Safety Instructions	43

Warnings	43
Cautions	43
Cleaning Instructions	45
Cleaning the Top Cover and Sheet Clips:.....	45
Cleaning the Hercules Patient Repositioner	46
Positioning Sheet Laundry Instructions	47
Maintenance	48
Troubleshooting	49
Service Instructions.....	50
Hercules Patient Repositioner Replacement.....	50
Full Support Surface Replacement	50
Power Cord Replacement	51
Sheet Attachment Strap Replacement.....	52
Frequently Ordered Parts	53
Obtaining Parts and Service.....	53
Warranty Information	54
1 Year Limited Warranty: Drive Unit.....	54
90 Day Limited Warranty: Top Cover.....	54
3 Year Limited Warranty: Support Surface/Mattress	54
User Assistance Information.....	55

Definition of Symbols

Manual Definitions

Throughout this manual different type fonts and icons are used to aid user readability and understanding of the content. Below are some examples.

Standard Text

Used for regular information.

Bold Face Text

Emphasizes a word or phrase.

NOTE:

SETS APART SPECIAL INFORMATION OR IMPORTANT INSTRUCTION CLARIFICATION.

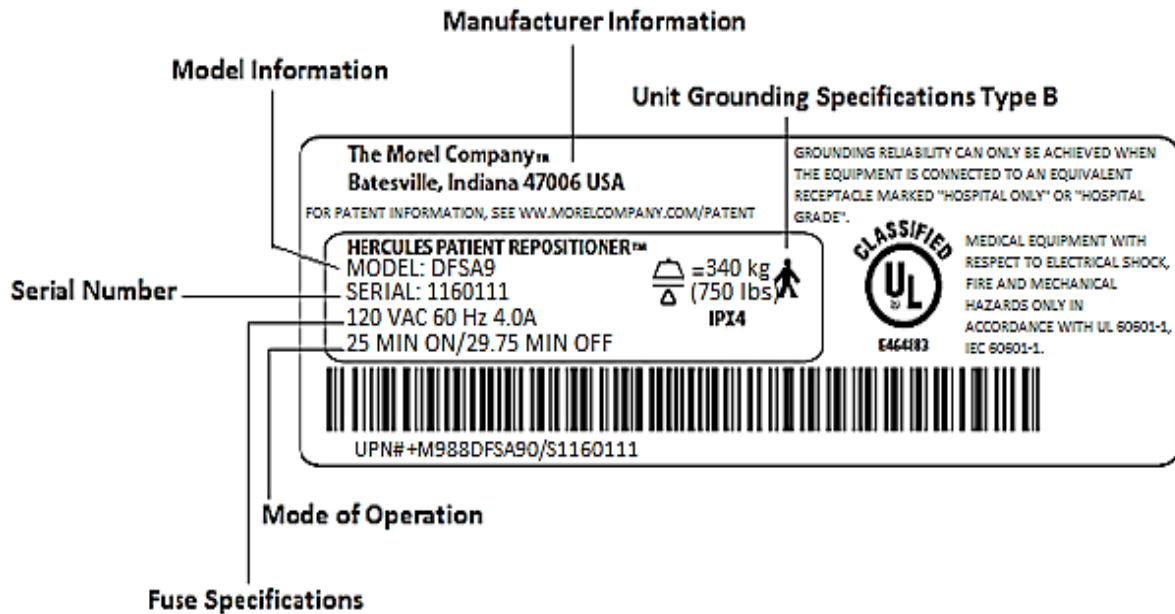
Warnings and Cautions



Warnings/Cautions: This symbol is intended to alert the user to the presence of important operating, maintenance or servicing instructions. Disregarding a warning could result in patient and/or user injury as well as damage to equipment.



Electrical Shock Hazard Warning: This symbol is intended to alert the user to the presence of electrical shock hazards. It is important to follow all instructions and special procedures to avoid electrical shock to the operator, care provider and/or patient.



Device Information

Description of the Device

The Hercules Patient Repositioner System consists of:

- **Drive Unit**-Conveniently located, includes user interface and simple to use.
- **Support Surface/Mattress**-Utilizes advanced open cell technology providing comfortable support for patients up to 750 lbs. (340 kg)
- **Specialized Sheet**-Soft and comfortable fabric with an increased length that allows 8-10 positioning's per sheet.



Purpose of the Device

The Hercules Patient Repositioner allows a single caregiver to reposition a patient up in bed with the simple push of a button. Now, in 10 seconds, the Hercules Patient Repositioner can help improve caregiver safety, increase caregiver efficiency, eliminate caregiver distractions, and protect your patient's dignity.

Indications for Use

The Hercules Patient Repositioner is intended to assist caregivers with up-in-bed patient repositioning. It is designed for use in acute care and post acute care settings in which a traditional hospital or healthcare bed is used. It is designed to be a key component in any safe patient handling program.

Specifications

<u>Dimensions</u>
<ul style="list-style-type: none"> • Mode of Use..... For Indoor Use Only • Positioning Sheet Dimensions.....(LxW) 16' (487.7cm) x 46''(116.8 cm) • Positioning Sheet Material.....100% Polyester • Hercules Patient Repositioner Dimensions..... (LxWxH) 38.5''(97.8cm) x 11''(27.9cm) x 3.75''(9.5cm) • Hercules Patient Repositioner Weight.....48 Lbs. (21.7 kg)
<u>Electrical</u>
<ul style="list-style-type: none"> • Power Requirements.....120VAC 60Hz 4.0A Maximum • Electric Shock Protection.....Class 1 • Degree of Shock Protection.....Type B • Fuses.....T 6.3A 250V....5mm x 20 mm...Time Delay • Mode of Operation.....Continuous with Intermittent Loading. .25 min ON/29.75 min OFF • Power Cord.....detachable, hospital grade..13' (396cm)
<u>Support Surface</u>
<ul style="list-style-type: none"> • Standard Dimensions 39''.....(LxWxH) 80''(203.2cm) x 38''(96.5cm) x 7''(17.8cm) • Standard Mattress Weight 39''.....36 lbs(16.8 kg) • Standard Weight Capacity 39''.....Up to 750 lbs (272-340 kg)
<u>Environmental Conditions</u>
<ul style="list-style-type: none"> • Temperature for storage and transport.....-29°C to +60°C (-20.2°F) to (140°F) • Relative Humidity for storage and transport.....10%-95% Relative Humidity • Atmospheric Pressure for transport, storage and use..... 70 kPa-106 kPa • Temperature for use.....+10°C t0 +40°C (50°F) to (104°F) • Relative Humidity for use.....20%-85% Relative Humidity • Product must be stored and transported in packaging free of moisture and dust.

Unpacking and Set-Up Instructions

Unpacking/Parts Breakdown

- Positioning Sheet
- Hercules Patient Repositioner
- Support Surface/Mattress



Unpacking Instructions for the 39" SW™ Lowboy®/Evolution™

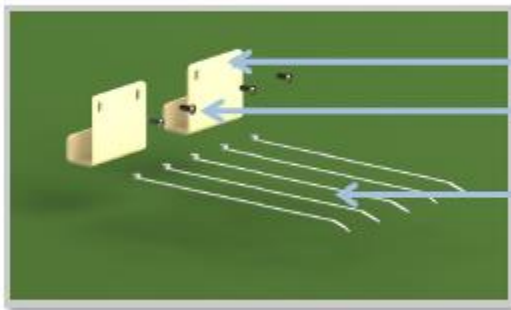
Remove the products from the packing material and examine for shipping damage. If damage is detected in shipping, contact the freight company and file a damage complaint immediately.

Included Items:



Hercules Patient Repositioner

Bed Attachment Hardware

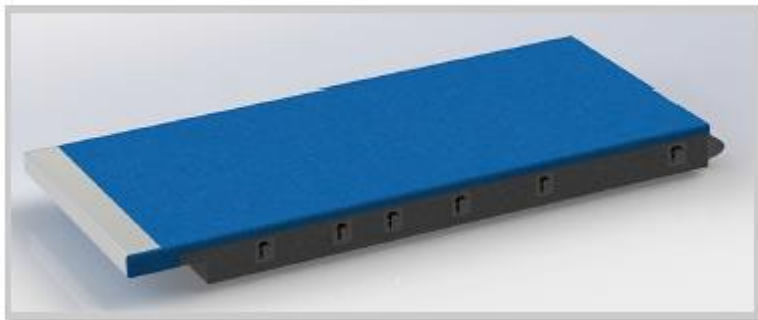


Bracket

Stainless Steel Screw (4 pcs.)

Wire ties (5 pcs.)

Support Surface/Mattress



Set-Up Instructions for the 39" SW™ Lowboy®/Evolution™

**NOTE: Read “Important Safety Instructions” prior to assembly/set-up.
(See Table Of Contents)**

Tools Required:



Follow these steps for installation on bedframes:

1. Remove headboard from bed and raise head of bed slight to access front edge of head section.



2. Remove support surface retainer by removing the two clips on the underneath of the support surface then lifting up.



3. Unplug the bed and any bed attached accessory outlet.



CAUTION/WARNING

Failure to disconnect all electrical sources attached to the bed may cause electric shock, personal injury and death.

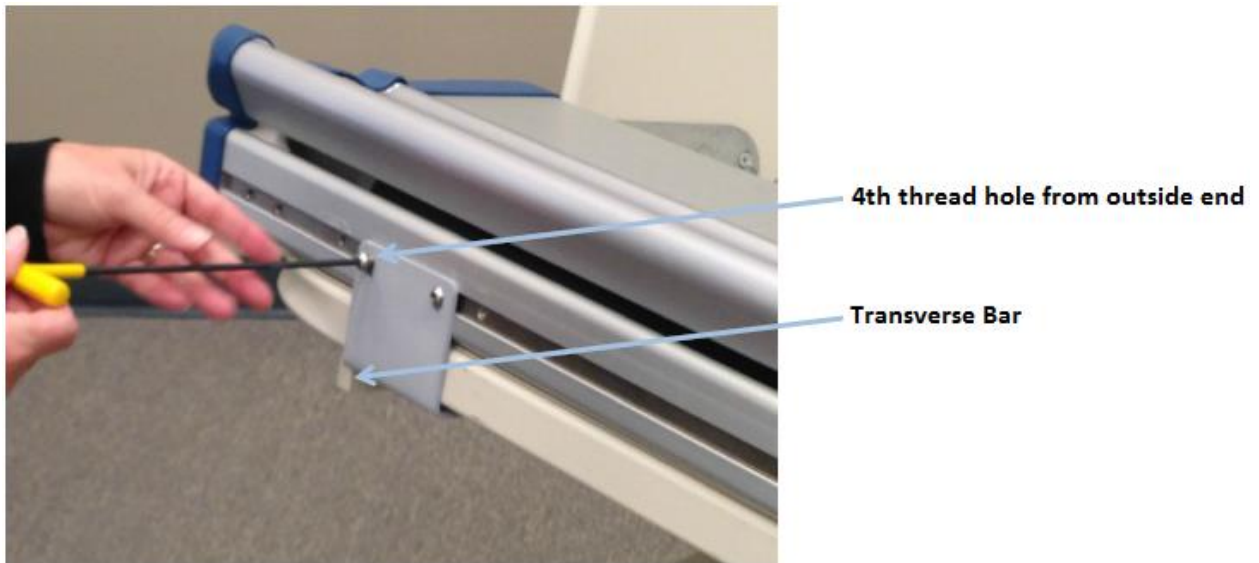
4. Place the Hercules Patient Repositioner box on bed. Open and fold back top of box. Gently flip unit onto open side. Pull box up to reveal contents. Gently lay the back down and remove packaging.



5. Position the Hercules Patient Repositioner on top of the head section with the mounting holes facing the end of the bed.



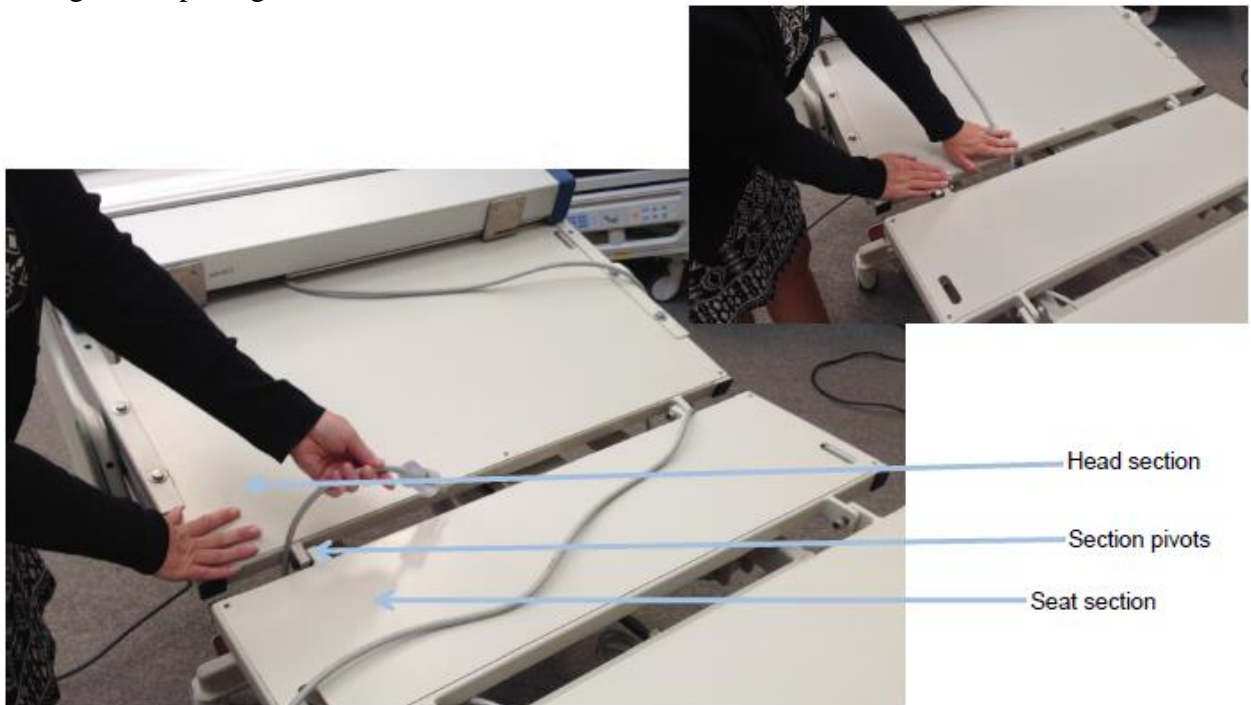
6. Hook one of the bed brackets under the deck section of the bed. Lift the bed bracket up while pushing the bracket outward towards the transverse bar. Fasten the bracket of the Hercules Patient Repositioner with two screws. These screws utilize the 4th and 5th threaded holes from the outside end.



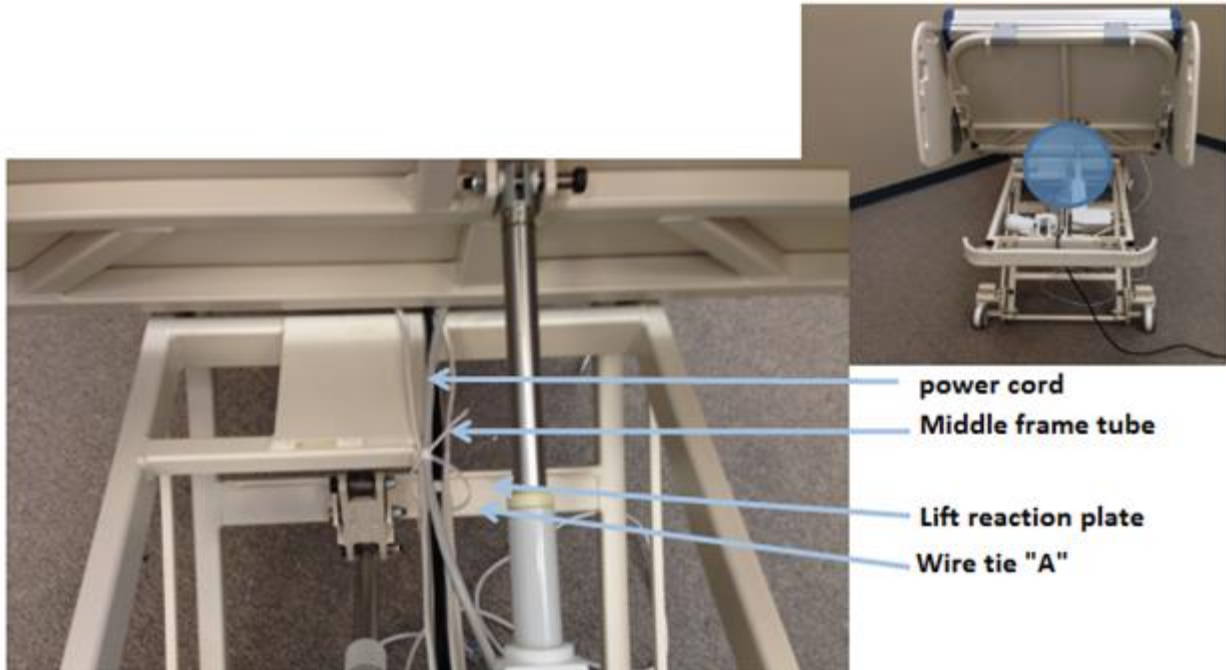
7. Repeat step 6 for the other bed bracket.



8. With the head of the bed 20 degrees, place the power cord in the slot between the head section and seat section of bed between the pivots of the sections. Feed the power cord through this opening.



9. Plug in bed. Raise head section of bed to its highest limit. Unplug bed. Route the power cord on top of middle frame tube with bed cables. Attach power cord to middle frame tube with wire tie close to the lift reaction plate. Do Not Tighten the Wire Tie At This Time.



CAUTION/WARNING

Failure to disconnect all electrical sources attached to the bed may cause electric shock, personal injury and/or death.

10. This step is to ensure the power cord has proper slack. Plug in the bed. Lower the head section down to 10 degrees. Unplug the bed. Tighten wire tie placed in previous step.



⚠ CAUTION / WARNING

Failure to disconnect all electrical sources attached to the bed may cause electric shock, personal injury and/or death.

11. Plug in the bed. Raise head section of the bed to its highest limit. Unplug the bed. Attach power cord to the middle frame tube with a wire tie in the approximate center length of the middle tube, close to the existing bed wire tie. Fully tighten wire tie. Attach the power cord to middle frame tube with a wire tie at the end of the middle frame tube, close to the existing bed wire tie.



Wire tie "B"

Existing bed wire tie



CAUTION / WARNING

Failure to disconnect all electrical sources attached to the bed may cause electric shock, personal injury and/or death.

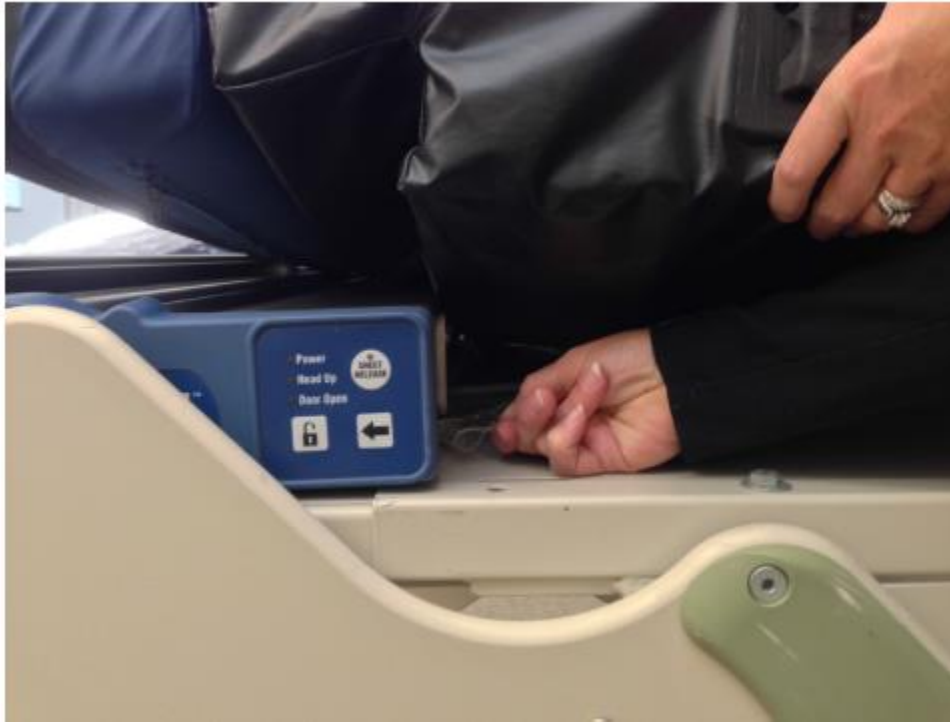
12. Attach the power cord to middle frame tube with wire tie "C" at the end of the middle frame tube, close to the existing bed wire tie. Fully tighten wire tie.



13. Use wire ties "D" and "E" to connect the power cord to bed power cord on the outboard side of the bed strain relief. These wire ties should be placed approximately 2 inches from the strain relief and 4 inches apart. Trim all placed wire ties.



14. To install the support surface, lower the head of the bed. Unpackage the support surface and place on the bed. Lift up on the head end of the support surface to access the mattress attachment strap. Slide loop of mattress attachment straps over grasp attached to the Hercules Patient Repositioner. Repeat for the other side.



15. Plug in the bed. Articulate the head of the bed examining for possible pinching of the power cord. **If pinching does exist, re-perform all appropriate steps to ensure proper installation. Ensure no patient entrapment risks exist between installed drive unit, sleep surface and the bed frame.** Plug in the Hercules Patient Repositioner. If bed has scale, re-zero the scale. Please read the user manual prior to using product.

16. Unfold the positioning sheet at the foot end of the support surface and place on the sheet shelf located between the support surface and toe board.



17. Pull the leading edge of the positioning sheet (the end containing buttonholes and “Advance Sheet” graphics) towards the head end of the bed.



18. Connect the positioning sheet to the sheet attachment strap by inserting the black caps into the buttonholes on each side at the head end of the sheet.



START



LOADING



LOADED



19. Secure the sheet by pulling the beaded hem into the sheet clips along both sides of the support surface starting at the foot end of bed and clip the sheet up toward the head section. **Do not attach sheet to last clip on either side of support surface closest to head section.**



20. Press the “Unlock” button and the “Advance” button at the same time to advance the sheet. Continue advancing the sheet until the “Advance Sheet” graphics have completely passed beyond the head end edge of the support surface.



21. Secure sheet clips closest to head section on both sides of support surface.

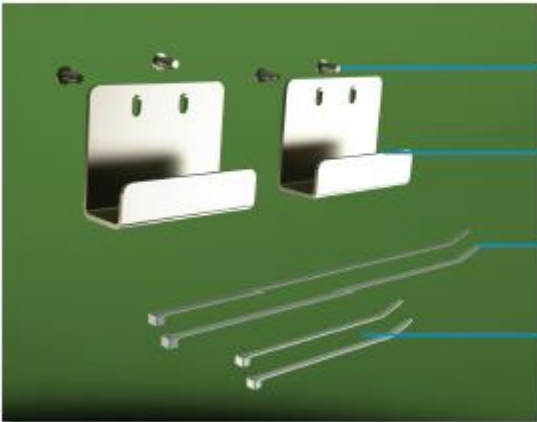
Unpacking/Installation Instructions: SW™ Bari-Rehab Platform^{2™}

Remove the products from the packing material and examine for shipping damage. If damage is detected in shipping, contact the freight company and file a damage complaint immediately.



Hercules Patient Repositioner

BED ATTACHMENT HARDWARE (BBSA)

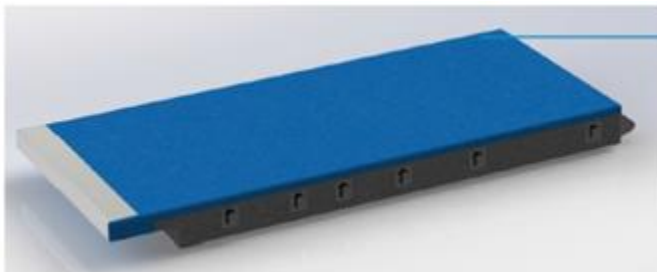


Stainless Steel Screw (4 Pieces)

Bari-Rehab Bracket (2 pieces)

11" Long Wire Tie (2 pieces)

5.5" Long Wire Tie (2 pieces)



Support Surface/Mattress

Set-Up Instructions: SW™ Bari-Rehab Platform^{2™}



CAUTION

These installation instructions must be carefully read and understood prior to installing the Hercules Patient Repositioner and any components thereof. All Safety Instructions should be read prior to assembly, operation and use. Failure to do so may result in improper installation, equipment damage, personal injury and/or death.

Tools Required:



1. CUTTING TOOL
(FOR CUTTING WIRE TIES)
2. 5/32" ALLEN WRENCH

1. Plug in bed. Remove headboard from bed and raise head of bed slightly to access front edge of the head section.



2. Unplug the bed and any bed-attached accessory outlet.



CAUTION

Failure to disconnect all electrical sources attached to the bed may cause electric shock, personal injury and/or death.

3. Remove the Hercules Patient Repositioner from its packaging. Place the Hercules Patient Repositioner on the top edge of the head deck with the mounting holes facing the end of bed.

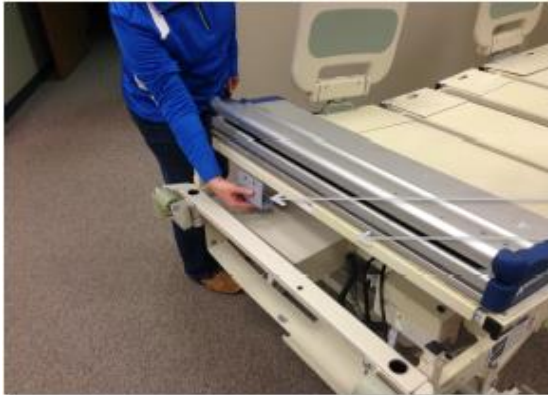


mounting holes
front edge of head section

4. Ensure that the drive unit is centered by measuring equal distances between both sides of the bed frame.



5. Position one of the brackets so that the lip is located behind the head section cross tube.



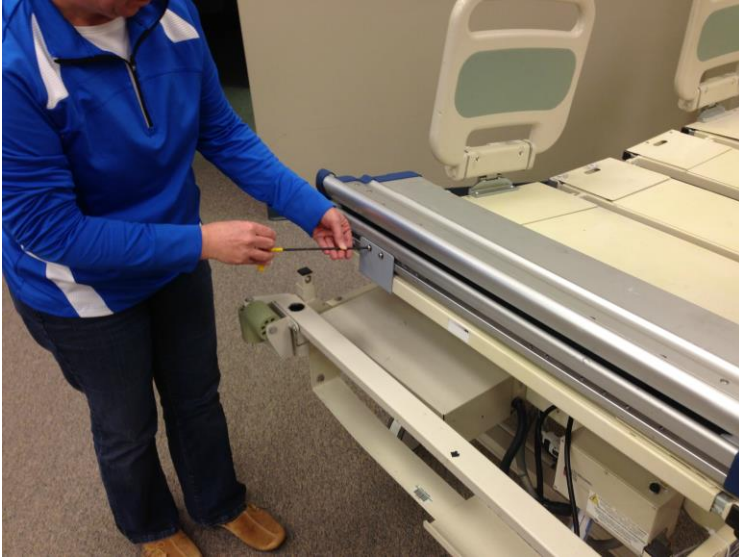
Lip
Head Section Cross Tube

6. Slide the bracket up so that the lip is located on the backside of the head section cross tube and the slots in the bracket line up with the third and fourth mounting holes (counting from the edge of the bed).



3 4

7. Attach the bracket to the Hercules Patient Repositioner using two of the four supplied screws. Do not fully tighten at this time.



8. Repeat steps four through six for the other bracket. Tighten all 4 screws.



9. Drop the power cord between the head section and seat section of the bed.



10. Plug in the bed. Raise the head section of the bed to its highest limit. Unplug the bed.

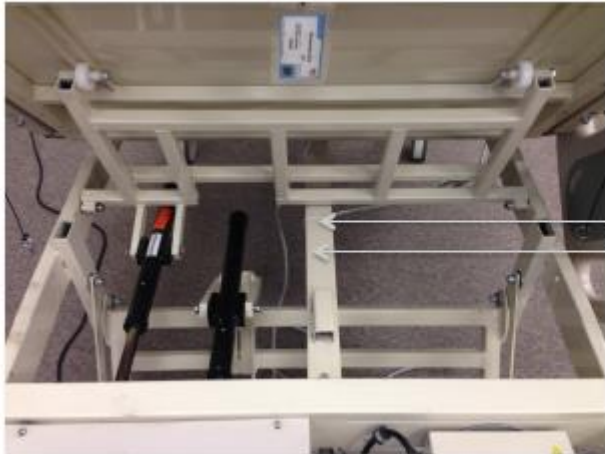


CAUTION

Failure to disconnect all electrical sources attached to the bed may cause electric shock, personal injury and/or death.



10. Cut existing wire tie that is located in the approximate middle of the wiring channel.



Cut this wire tie.
Wiring channel

11. Using the hole that the removed wire tie utilized, attach the power cord into the wiring channel along with the existing bed cables with one of the 11" wire ties. Ensure the power cord has enough slack to not contact the head lift frame.



power cord
Head lift frame

12. Secure the power cable again to the wiring channel with the other supplied 11" wire tie. Place the wire tie on the head-end side of the existing cable clamp.



Existing clamp

13. Following the bed cables, route the power cord under the cross brace. Secure the power cord to the bed power cord with the two 5.5” inch wire ties provided. Space the wire ties approximately two inches apart. These cable ties should be on the “wall” side of the P-clip.



14. Remove the mattress restraint at the foot end of the bed.



15. Plug in the bed and lower the head of the bed.

Un-package the support surface and place on the bed. Lift up on the head end of the support surface to access the mattress attachment straps. Slide the loop of one of the mattress attachment straps over the grasp attached to the Hercules Patient Repositioner. Repeat for the other side.



16. Articulate the head of the bed and examine for possible pinching of the power cord. If pinching does exist, re-perform all appropriate steps to ensure proper installation. Cut all wire ties to length.

17. For placement/installation of the Hercules Positioning Sheet, see the SW 39” Lowboy/Evolution set-up instructions step/number 16-20 and follow the procedure. (See Table of Contents)

Ensure no patient entrapment risks exist between the patient and the installed Hercules Patient Repositioner System.

Installation for this bed is complete.

Operating Instructions

The Hercules Patient Repositioner provides users the ability to reposition patients utilizing the below drive unit interface instructions.

Control Unit Operation



1. **Power LED:** A green LED that is illuminated when the Hercules Patient Repositioner is connected to a power source.
2. **Head Up LED:** An amber LED that is illuminated when the head of the bed is raised past 30 degrees; the system will not advance the positioning sheet when this LED is illuminated.
3. **Door Open LED:** An amber LED that is illuminated when the drive door is open; the system will not advance the positioning sheet when this LED is illuminated.
4. **Unlock Button:** This button, represented by an unlatched padlock, must be pressed at the same time as the “Advance” button to operate the system and advance the positioning sheet.
5. **Advance Button:** This button, represented by an arrow, must be pressed at the same time as the “Unlock” button to operate the system and advance the positioning sheet.
6. **Sheet Release Button With LED:** When the user presses this button, an amber LED will illuminate allowing the roller to spin freely for removal of the positioning sheet. To engage the roller and turn off the illuminated LED, press the “Advance” button and the “Unlock” button at the same time.

Hercules Patient Repositioner

The Hercules Patient Repositioner drive unit is the power behind the Hercules Patient Repositioner System and is located at the head end of the bed just below the hinged head section of the support surface.

1. User Interface

Controls are located on both sides of the Hercules Patient Repositioner, allowing for the operation of the system and providing status LEDs.

2. Mattress Attachment Hooks

The two hooks located on the back wall of the Hercules Patient Repositioner are used to secure the support surface.

3. Drive Door

The hinged drive door allows access to the roller compartment for cleaning and servicing purposes.

4. Sheet Attachment Strap

The strap is used to connect the positioning sheet to the roller. The strap contains black caps that are inserted into buttonholes on the head section of the positioning sheet.

5. Roller

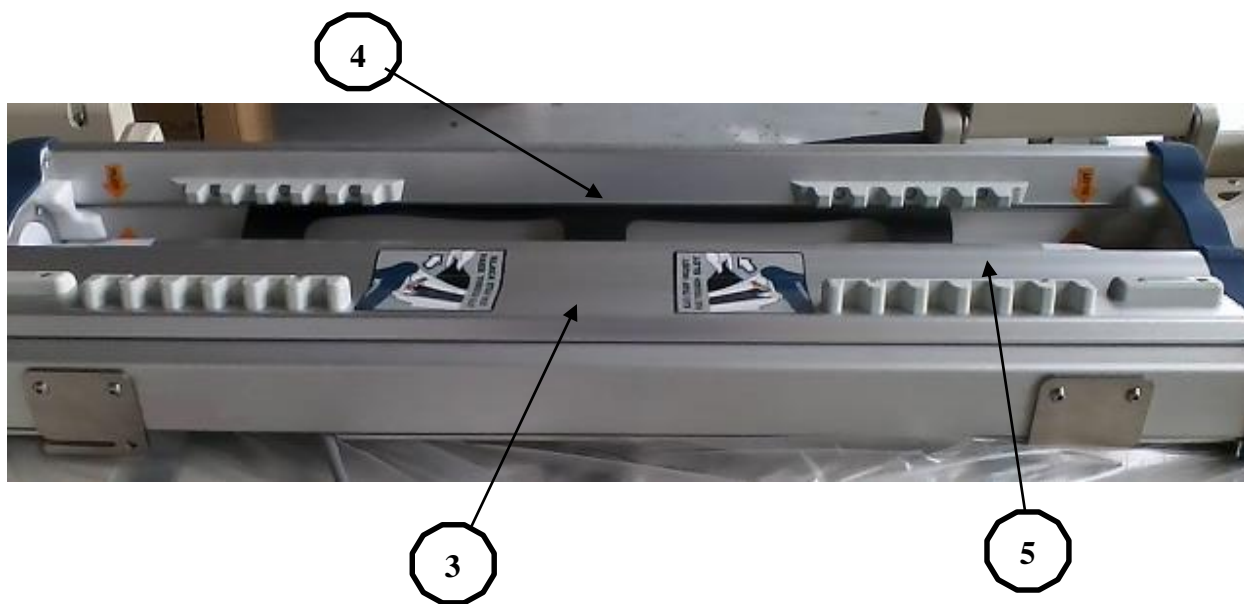
The roller connects to the sheet attachment strap and rotates to wind the sheet during repositioning.

6. Sheet Slot

Narrow access point on the drive unit providing an entryway for the sheet.



Hercules Patient Repositioner Cont.



Support Surface/Mattress

Support Surface

1. Made with a tri-laminated high density foam core, and multi-zoned pressure redistribution top layer this mattress is designed for patient comfort and aids in the prevention of pressure ulcers.

Hinged Head Section

2. The upper head section of the support surface is hinged, allowing it to be easily lifted by the user to access the Hercules Patient Repositioner.

Mattress Attachment Straps

3. The straps, located on the bottom of the support surface, are used to secure it to the Hercules Patient Repositioner via the mattress attachment hooks.

Sheet Clips

4. The sheet clips, located along the side of the support surface, secure the positioning sheet and allow it to advance during repositioning.

Sheet Shelf

5. The shelf, located at the foot end of the support surface, supports the unused portion of the positioning sheet.



Positioning Sheet

The Positioning Sheet is 46” wide by 16’ long and allows for approximately 8-10 positioning’s per use.

Sheet Loading Indicator

1. The Load Indicator instructional markings (“Advance Sheet” graphics), located at the head end of the positioning sheet, indicate the distance and direction the sheet is to be advanced and how much sheet needs to be advanced into the drive unit prior to pulling patient weight.

Buttonholes

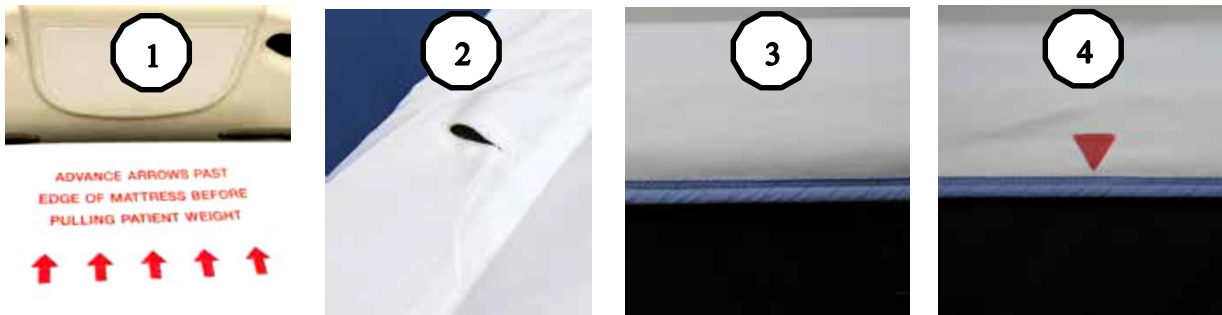
2. The two buttonholes, located in the head end of the positioning sheet, are used to connect the positioning sheet to the sheet attachment strap.

Beaded Hem

3. The beaded blue hem, located along both lateral sides of the positioning sheet, enables the sheet to be secured into the sheet clips.

Sheet Change Indicator

4. Red triangles along the hem of the positioning sheet signal the amount of sheet remaining to be advanced. When the markers have reached the head end edge of the support surface, the sheet has reached its last pull and should be changed.



Patient Care Functions

Placing the Patient on the Support Surface/Mattress



Warning/Caution

Keep patient and objects clear of sheet intake and siderails during operation. Failure to properly follow these instructions and facility protocols could result in serious injury, death or equipment damage.

NOTE: Read Important “Safety Instructions” and “Safety Tips” before attempting any Patient Care Function.

Place the patient on the support surface from a bed or stretcher with a transfer device. In order to ensure proper immersion and envelopment of the patient, the user should:

1. CPR: The standards for life support recommended by the American Heart Association for performing CardioPulmonary Resuscitation (CPR) recommend a hard level surface for performing CPR, moving the person to the floor if possible. For performing CPR on the Hercules Patient Repositioner, place a CPR board lower the head of the bed, position the patient on their back and follow the standard CPR procedures of the facility.

Re-Positioning the Patient

1. Lower the head end of the bed to 30° or less and check that the amber Head Up and Door Open LEDs are not illuminated.
2. Press the “Unlock” button and the “Advance” button at the same time to advance the sheet. Release when the patient has reached the desired position.



NOTE: DO NOT leave a patient unattended on the support surface with the safety side rails in the down position. When leaving a patient, secure the safety side rails in the up position. Make sure the safety side rails are high enough to properly protect the patient, while continuing to be mindful of the FDA guidelines on bed rail entrapment. (See Table of Contents For Bed Rail Entrapment)

Prone Position

Do not leave a patient positioned prone on the support surface. The decision to position a patient prone should be at the discretion of the facilities medical staff.

Changing The Positioning Sheet With A Patient In Bed

Note: To change the positioning sheet with the patient in bed, please follow your standard facility protocol for changing sheets while the patient remains in bed, along with these additional steps.

1. Press the “Sheet Release” button located on the user interface to disengage the roller and release the positioning sheet from the drive unit. The amber “Sheet Release” LED will illuminate.



2. Pull the positioning sheet out of the Hercules Patient Repositioner and disconnect it from the sheet attachment strap.



3. Grasping each sheet clip, pull down to release the positioning sheet's beaded hem on both sides of the support surface.



4. Unfold the new positioning sheet with the "Advance Sheet" graphics past the head end edge of the support surface. Ensure the "Advance Sheet" graphics are positioned completely beyond the head end edge of the support surface prior to placing the specialized sheet under the patient. (This will allow enough sheet to properly load prior to pulling patient weight in step 1)



5. Unfold the positioning sheet along the side of the patient and place the remaining sheet at the foot end of the sleep surface.



6. Secure the positioning sheet to the side of the support surface you are working on by pulling the beaded hem into the sheet clips along that side of the support surface.



7. Follow hospital protocol for rolling the patient and walk around to the other side of the bed.
8. Remove the soiled positioning sheet.
9. Secure the positioning sheet to the side of the support surface you are working on by pulling the beaded hem into the sheet clips along that side of the support surface.
10. Connect the positioning sheet to the sheet attachment strap by inserting the black caps into the buttonholes on both sides of the head end of the sheet.



11. Press the “Unlock” button and the “Advance” button at the same time to advance the positioning sheet until the patient is in the desired position.



12. Place the remaining portion of the positioning sheet on the sheet shelf at the foot end of the support surface.



13. Grasping the sheet clip, pull down to release the sheet’s beaded hem on both sides of the support surface.



14. Press the “Sheet Release” button located on the user interface to disengage the roller and release the specialized sheet. The amber LED will illuminate.



15. Pull the positioning sheet out of the Hercules Patient Repositioner and disconnect it from the sheet attachment strap.



NOTE: Follow hospital protocols for sheet cleaning and laundry services.

Safety Tips

Seven Zones of Bed Rail Entrapment

If the patient would have any clinical conditions that could result in risk of falling or improperly lying in bed, the bed should be left at its lowest setting and in flat position when not attended. Sizewise recommends the use of bed rails if they are available. There are seven zones of bed rail entrapment.



WARNING: Bed rail entrapment is a serious health risk that can result in serious injury or even death. Sizewise recommends the care provider be mindful of the most up to date FDA guidelines relevant to bed rail entrapment, as serious injury can result. These guidelines can be found on the FDA website. When using an Air Therapy system the care provider is responsible for ensuring the mattress properly fits the bed frame. It is also the care provider's ultimate decision whether or not to use bed rails with the patient.

Zone 1: Within the Rail

Zone 2: Under the Rail, Between the Rail Supports or Next to a Single Rail Support

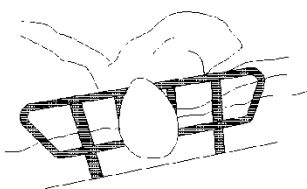
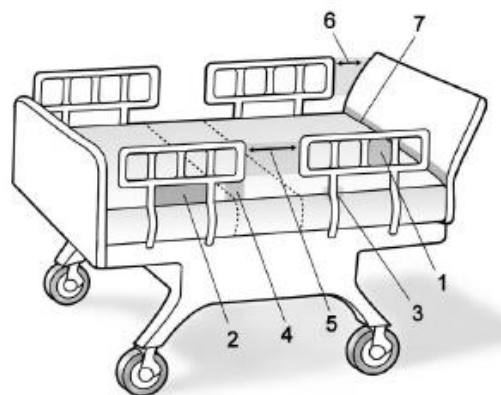
Zone 3: Between the Rail and the Mattress

Zone 4: Under the Rail, at the Ends of the Rail

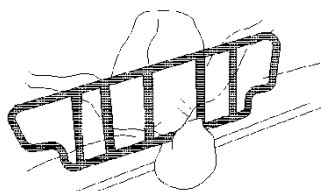
Zone 5: Between Split Bed Rails

Zone 6: Between the End of the Rail and the Side Edge of the Head or Footboard

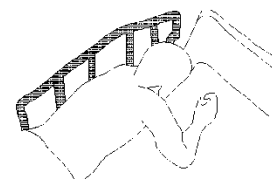
Zone 7: Between the Head or Footboard and the Mattress End



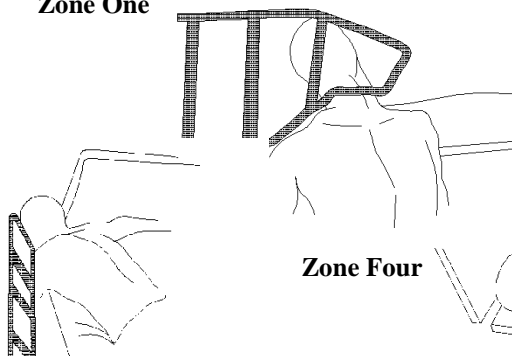
Zone One



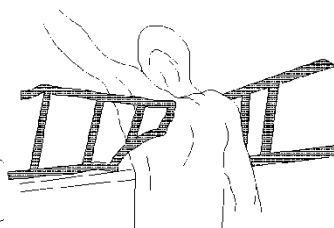
Zone Two



Zone Three



Zone Four



Zone Five

Zone Six

Zone Seven

Storage and Disposal

Always store the support surface flat on a clean, level surface. Avoid storage of other equipment on top of the support surface. DO NOT expose the Hercules Patient Repositioner System to humidity greater than 95%.

End-of-life Sizewise products must be disposed of properly according to local laws and regulations. Please contact Sizewise or your local authorities for disposal and recycling options.

Important Safety Instructions



Unpacking and Set-Up Instructions

- Keep out of direct sunlight.
- (110V unit ONLY) Ensure the power cord is plugged into a properly grounded AC 110V outlet.

Electrical Safety Tips

- Medical equipment should not be used, stacked or located on or around equipment that may create electromagnetic interferences.
- Using other manufacturers' cables and accessories may affect EMC performance. Unauthorized use of these items will void warranty and could result in patient and/or user injury as well as damage to equipment or other property.
- DO NOT use the device if the power cord is cut, frayed or loosely connected.
- The potential for electrical shock exists with electrical equipment. Failure to follow these instructions and facility protocol could result in serious injury, death or equipment damage.
- Unplug the Hercules Patient Repositioner from the AC outlet before beginning any cleaning or service procedures. Failure to properly follow these instructions and facility protocol could result in serious injury, death or equipment damage.
- See specifications for main power requirements. Failure to do so may cause equipment damage.
- To avoid electrical shock, DO NOT open the Hercules Patient Repositioner. Refer servicing to qualified personnel only.
- To protect against electric shock, grounding reliability can only be achieved when the equipment is connected to an equivalent receptacle marked "hospital only" or "hospital grade". Failure to follow these instructions could result in serious injury, death or equipment damage.
- Medical electrical equipment needs special precautions regarding EMC performance and needs to be installed and put into service according to the EMC information provided.
- Portable and mobile radio frequency (RF) communications equipment can affect medical electrical equipment. This Product is intended for use in the electromagnetic environments specified.

Support Surface Cleaning Safety Instructions

- It is recommended that gloves and protective clothing be worn at all times during cleaning and disinfecting.
- The mattress requires regular maintenance to ensure performance and avoid premature wear, damage and injury.
- Do not use excessive liquid or harsh cleaning agents.
- Do not use harsh cleaners or solvents not intended for fabric applications.
- Do not power wash.
- Do not steam clean.
- Do not machine wash or dry.
- Do not autoclave.

Warnings

- Use care when closing the drive door ensuring all objects are clear of the sheet compartment. Failure to properly follow these instructions and facility protocol could result in personal injury.
- Keep the patient and objects clear of the positioning sheet intake and side rails during operation. Failure to follow these instructions and facility protocols could result in serious injury, death or equipment damage.
- Be sure to keep hair clear of intake sheet and side rails during operation. Failure to properly follow these instructions and facility protocols could result in serious injury, death, or equipment damage.
- Ensure that there are no patient entrapment risks with the Hercules Patient Repositioner System and bed. Failure to follow these instructions could result in serious injury, death, or equipment damage. (See Table of Contents for Seven Zones of Patient Entrapment)
- Do not use in an oxygen enriched environment. Failure to follow these instructions could result in serious injury, death, or equipment damage.
- If a patient does not advance with sheet during operation, lower the bed head angle until patient repositioning resumes. Failure to do so could result in patient injury.
- The end user of this product should assure it is used in such an environment.
- Portable and mobile RF Communications equipment (cell phones) should not be used at close distances.
- Power frequency magnetic fields should be at levels characteristic of a typical location in a typical commercial or hospital environment.

Cautions

- If the positioning sheet is not properly connected to the sheet attachment strap, it will disengage from the positioning sheet during loading.
- Please ensure the positioning sheet is properly secured in the sheet clips initial patient repositioning.
- When first making the bed using the Hercules Patient Repositioner System, the positioning sheet should be advanced until the “Advance Sheet” graphics are completely beyond the head end edge of the support surface. This will ensure that the specialized sheet has been properly loaded and is ready to pull patient weight.

- The safe working load of the Hercules Patient Repositioner System is 340 kg (750 lbs). Failure to stay at or below this limit may cause equipment damage.
- See specifications for protection against fluid ingress. Failure to do so may cause equipment damage.
- Only authorized personnel should engage in the troubleshooting process. Troubleshooting by unauthorized persons could result in personal injury or equipment damage.
- The Hercules Patient Repositioner System must be installed and operated by trained personnel only. Failure to follow these instructions could result in serious injury, death or equipment damage.

Cleaning Instructions

WARNING and CAUTION:



It is recommended that gloves and protective clothing be worn at all times during cleaning and disinfecting.

NOTE: Improper cleaning, rinsing or the incorrect use of cleaning agents can lead to premature fabric discoloration and breakdown of the fabric's fluid-resistance, stain-resistance and fabric strength. Properly rinsing all cleaning agents and disinfecting chemicals is a critical step in extending the life of covers on medical mattresses and support surfaces.

Over time, cleaning solutions may cause damage to the integrity of the fabrics used for support surfaces. Cleaning agents that are strong enough to be efficacious cleaners and disinfectants may cause degradation of the same fabrics on which they are being used.

To minimize the negative impact of cleaning agents:

- Contact time must be monitored and kept to the required time identified on the manufacturer's instructions.
- All cleaning solutions must be diluted in accordance with manufacturer's instructions.
- All covers must be rinsed after every cleaning cycle. Rinsing of the support surface covers with clean water as the immediate step after the disinfection process is fundamental to extending the usable life of the covers.

NOTE: Only the outer cover of the mattress requires cleaning and maintenance. Disassembly of the support surface for maintenance of internal components is not recommended. Do not use harsh solvents or cleaners. Special care should be used to not puncture the mattress with needles or sharp instruments. This may result in loss of integrity of the mattress cover or internal components.

Cleaning the Top Cover and Sheet Clips:

Personal Protective Equipment should always be used as directed by the Disinfectant's Material Safety Data Sheet.

1. Wipe with a soft sponge or cloth.
2. Use a neutral or mild soap that is fabric-safe and diluted with lukewarm water.
3. For sanitation, use appropriate bleach or quaternary (ammonia) type disinfectants.
4. For blood contamination, use a 1:10 dilution of household bleach (5.25% sodium hypochlorite).
5. Dilute all cleaning products to manufacturer's instructions.
6. After using a cleaning agent, rinse cover with lukewarm water to remove cleaning agent residue.
7. Do not use excessive liquid or harsh cleaning agents. Do not power wash. Do not steam clean.
8. Do not use hard surface cleaners or solvents not intended for fabric applications.
9. The following cleaners/disinfectants have been approved to work with the SW Hercules™ Sleep Surface: Dispatch™, Clorox Healthcare Bleach™, and PRO-TECH™

Cleaning the Hercules Patient Repositioner

1. Unplug the Hercules Patient Repositioner from the AC outlet.
2. With the positioning sheet removed, lift the hinged head section of the support surface to expose the system's drive door.
3. Open the door and wipe down all exposed surfaces of the Hercules Patient Repositioner and the sheet attachment strap using a soft sponge or cloth with mild detergent and warm water.



4. To remove difficult spots or stains, use standard household cleaners and a soft bristle brush.
5. When visible soilage exists, disinfect the system using a tuberculocidal disinfectant. Use the disinfectant as specified on the manufacturer's label.
6. Do not use excessive liquid or harsh cleaning agents. Do not power wash nor steam clean.
7. Always refer to your facility's standard cleaning procedures and processes.

Positioning Sheet Laundry Instructions

The Positioning Sheet is comprised of 100% lint-free polyester fibers and is treated to encourage antimicrobial and soil release activity to ensure long lasting use. The following laundering procedures are recommended:

- We recommend a low active alkalinity wash solution and thorough rinsing and neutralization to remove surfactants and residual alkali. During the use of chlorine bleach, active alkalinity levels should be kept under 900 ppm.
- We recommend that care be taken in the selection of high cloud point surfactants or the use of anionic materials that are free rinsing.
- The wash load should be approximately 70% of rated capacity.
- We recommend temperatures between 150°F-190°F (62°C-88°C) be used for the break/suds operation.

The sheet can be tumble-dried or can be dried on ironers. Follow the recommended guidelines for the drying/ironing/folding process.

Guidelines for sheets to be tumble-dried in tunnels or off-line dryers:

- Unload the washer
- Transfer into tumble dryer
- The temperature inside the dryer should be between 240°F-290°F (116°C-143°C)
- Reduce the drying cycle to about 15-20 minutes (cycle time depends on the equipment type and size)
- Use cool down cycle for about 8 minutes

Guidelines for sheets to be ironed:

- Unload the washer
- Feed damp sheets into the ironer
- The temperature of the ironers should not exceed 300°F (149°C) and should have a run speed of 90-110 feet/minute.

Guidelines for automated folding of sheets:

- Depending on type of folder used, the sheet may require an additional manual fold prior to inserting into folder
- Feed into folder

Cleaning Blood and Other Excretions:

Blood and other excretions should be wiped up while wet, if possible. These substances are more difficult to remove once they have dried to surfaces. Dried blood and other excretions are to be removed using ample disinfectant solution in order to moisten the substance and make it easier to clean.

Maintenance



CAUTION: The support surface requires regular maintenance to ensure performance and avoid premature wear, damage and injury.

If any of the items are loose, worn, bent or distorted immediately have them checked and/or repaired by an authorized Sizewise technician. Frequent maintenance and servicing will improve performance and extend mattress life. For long term use, the following maintenance chart should be followed:

The following is an equipment safety checklist that can be used with the maintenance chart to maintain and service this product:

- Inspect top cover for punctures, rips, tears or damage.
- Inspect mattress base for punctures, rips, tears or damage.
- Connect the Hercules Patient Repositioner and verify proper operation.
- Ensure mattress is clean/disinfected and patient ready.

Troubleshooting



CAUTION: Only authorized personnel should engage in the troubleshooting process. Troubleshooting by unauthorized persons could result in personal injury or equipment damage.



WARNING: To avoid electrical shock, DO NOT open the control unit. Refer servicing to qualified personnel only.

Positioning Sheet Won't Advance.

- Check to see if the green power LED on the user interface is illuminated. If not, check power cable to ensure it is plugged in.
- Check to see if the “Head Up” amber LED is illuminated. If so, the bed head angle is raised above 30 degree, and the system will not advance the positioning sheet. Lower the bed head angle to 30 degrees or less.
- Check to see if the “Door Open” amber LED is illuminated. If so, this indicates that the drive unit door is open and the system will not advance the positioning sheet. Check door for blockage or obstructions and ensure it is completely closed.
- Ensure the sheet attachment strap and the sheet is routed properly through the sheet slot.
- Check to make sure the positioning sheet is properly attached through the buttonholes.
- Check to ensure the positioning sheet has been advanced beyond the “Advance Sheet” graphics before placing the patient on the support surface.

Positioning Sheet Is Advancing But Crooked

- Check to ensure that the positioning sheet is properly attached to all of the sheet clips.

If there is power loss:

- Check the ON/OFF switch.
- Check power cord for any damage.

NOTE: If the troubleshooting process does not solve the problem please contact a Sizewise representative for service.

Service Instructions

Hercules Patient Repositioner Replacement

Tools Required” T25 Torx Wrench or Bit, Side-Cutters, Installation Instructions.

NOTE: Read Safety Instructions and Safety Tips Prior to performing any operation or service.

1. Standing at the side of the bed, reach under the head end of the sleep surface and pull one mattress attachment strap towards you to completely slide the mattress attachment strap off of the attachment bracket.
2. Repeat step 1 for the mattress attachment strap on the opposite side of the sleep surface.
3. Detach the Hercules Patient Repositioner from the bed by removing the four screws in the attachment brackets located on the front face, adjacent to the headboard.
4. Tilt the entire Hercules Patient Repositioner up towards the headboard so that it is resting on the front face.
5. Remove the P-clip that secures the power cord to the Hercules Patient Repositioner and unplug the power cord.
6. Remove the Hercules Patient Repositioner from the bed.
7. Rest the new Hercules Patient Repositioner on its face at the head end edge of the bed.
8. Attach the power cord to the Hercules Patient Repositioner by inserting the plug into the receptacle and securing the new P-clip.
9. Lay the Hercules Patient Repositioner back down on its rubber feet and reattach the four attachment bracket screws securing it to the bed.

Full Support Surface Replacement

1. Standing at the side of the bed, reach under the head end of the support surface and pull one mattress attachment strap towards you to completely slide the mattress attachment strap off of the attachment bracket.
2. Repeat step 1 for the mattress attachment strap on the opposite side of the support surface.
3. Remove the support surface.
4. Install the new Hercules support surface by following the steps outlined in the Installation Instructions. (See Table of Contents)

Support Surface Foam Only Or Cover Only Replacement

1. Remove the support surface from the bed by following steps 1 through 3 of the full support surface replacement instructions above.
2. Flip the support surface over exposing the complete underside of the support surface.
3. Fully unzip the zipper located on the bottom of the cover.

4. Completely remove the old foam from the support surface cover and properly discard the old foam.
 5. Insert the new foam by sliding the head end of the new foam into the support surface cover while being careful to have the head end foam notch facing upward.
 6. While pulling back on one foot end foam corner towards the center of the support surface, use the other hand to lift up the middle of the foam to allow the corner to fit into the cover, then let go of the foam corner. Repeat this step for the other foot end foam corner.
 7. Once the foam is captured by all four corners of the cover, flatten the foam and cover to properly align each component with the other.
 8. Completely close the support surface cover zipper being careful not to snag the fire barrier.
 9. Install the support surface by following the steps outlined in the Installation Instructions.
- NOTE: Please follow hospital protocols for biohazards and waste removal.**

Power Cord Replacement

Tools Required: T25 Torx Wrench or Bit, Side-Cutters, Installation Instructions

1. Standing at the side of the bed, reach under the head end of the support surface and pull one mattress attachment strap towards you to completely slide the mattress attachment strap off of the attachment bracket.
 2. Repeat step 1 for the mattress attachment strap on the opposite side of the support surface.
 3. Detach the Hercules Patient Repositioner from the bed by removing the four screws in the attachment brackets located on the front face of the drive unit adjacent to the headboard.
 4. Tilt the entire drive unit up towards the headboard so that the drive unit is resting on its front face.
 5. Remove the P-clip that secures the power cord to the Hercules Patient Repositioner.
 6. Unplug the detachable power cord from the Hercules Patient Repositioner.
 7. Cut all wire ties securing the power cord to the bed and remove the defective power cord.
 8. Attach the new power cord to the Hercules Patient Repositioner by inserting the plug into the unit's receptacle and securing the new P-clip to the drive unit's housing wall.
 9. Route the new power cord through the bed by following the steps outlined in the Installation Instructions.
- Lay the Hercules Patient Repositioner back down on its rubber feet and re-attach the four attachment bracket screws securing the unit to the bed.

Sheet Attachment Strap Replacement

Tools Required: Philips screwdriver

1. Pull the sheet attachment strap out of the Hercules Patient Repositioner so that the three clasps are exposed that secure the sheet attachment strap to the drive unit's roller.
2. Using a standard Philips screwdriver, remove the three screws that attach the clasps to the roller. Remove the sheet attachment strap from the drive unit.
3. Align the three strap tabs on the new attachment strap with the three roller clasps.
4. Attach the three screws to secure each clasp to the roller while pinching the strap between the roller and each of the three clasps.

Frequently Ordered Parts

Power Supply.....	27607000
Control PCB.....	27607001
Motor/Clutch Assembly.....	27607002
Left User Interface Control.....	27607003
Right User Interface Control.....	27607004
Power Cord 13.5" (34.2 cm).....	27000445
Sheet Strap.....	27607005

Obtaining Parts and Service

For parts and service information contact your Sizewise Representative at 1-800-814-9389.

Warranty Information

The SW Hercules™ Repositioning System is designed to provide maximum comfort and durability, using the finest quality materials and workmanship.

1 Year Limited Warranty: Drive Unit Hercules Patient Repositioning System

Sizewise warrants, to the original purchaser, if within the first 12 months from the date of purchase, a defect is found in material or workmanship; we will inspect and repair or replace the product at no charge.

90 Day Limited Warranty: Top Cover

Sizewise warrants, to the original purchaser, if within the first 90 days from the date of purchase, a defect is found in material or workmanship; we will inspect and repair or replace the product at no charge.

3 Year Limited Warranty: Support Surface/Mattress

Foam Cavity and Foam Comfort Layers - if, within the first 12 months from the date of purchase, a defect is found in material or workmanship, we will inspect and repair or replace the product at no charge. During the normal use of a product fabrics may stretch and foam layers may discolor and lose some resiliency. This warranty does not cover changes in materials from normal use.

Months 13-36 are warranted to repair or replace the product if a defect is found in material or workmanship at a rate of 50% of the Sizewise retail price. During the normal use of a product fabrics may stretch and foam layers may discolor and lose some resiliency. This warranty does not cover changes in materials from normal use.

We reserve the right to substitute materials if the original materials are no longer available.

This warranty covers defects in manufacturing and does not apply to any defects caused by misuse, improper storage, negligence, accidental damage or normal wear including body impressions in the mattress.

To obtain performance under this limited warranty, contact Sizewise Customer Service Department, provide proof of purchase, explain the defect and arrange for the return of the defective part for service.

Any mattress that is returned and is deemed non-safe (due to bodily fluids and excrements) will be discarded and no credit given. This warranty is void if the manufacturer's tag is removed.

Sizewise liability is limited to this written warranty. No other warranty is expressed or implied, nor does this warranty cover so called incidental or consequential damages. Sizewise's liability under this warranty shall not exceed the purchase price of the product.

Some states do not permit limitations on how long an implied warranty may last; some states do not permit the exclusion or limitation of incidental or consequential damages, so either or both of the above limitations may not apply to you.

This warranty gives you specific legal rights and you may also have other rights which vary from state to state.

If further information is needed regarding this limited warranty, contact our customer service department at 1-800-814-9389.

User Assistance Information

For questions or assistance with this product, contact Sizewise at:

Sizewise
1600 Genessee
Suite 950
Kansas City, Missouri 64102
Phone: 1-800-814-9389



SIZEWISE

SizeWise
1600 Genessee
Suite 950
Kansas City, Missouri 64102
Phone: 1-800-814-9389
sizewise.net

SizeWise and SizeWise Rentals are trademarks of SizeWise Rentals, L.L.C. All specifications, equipment and prices are subject to change without notice. Photos and drawings are representative of the products and may vary slightly from actual production models.